



PTW ASIA PTE LTD

Semitool Quattro	
Manufacturer	Semitool
Model	Quattro
Description	Solder Plating
Serial Number	T239257
Wafer Size	8 inch
Wafer Aligner	Yes
Year of Manufacture	2008
Load Port	2
Chamber	2 SRD Cup 2 SnAg ECD



This data sheet is provided to you on a strictly confidential basis and contains commercially sensitive and valuable information. No part of its content may be provided to any person without our prior written consent. This data sheet is not an offer capable of acceptance. The information contained in this data sheet is, to our knowledge and information, accurate, but it may contain typographical errors and we do not warrant the completeness or accuracy of the information contained herein. Any offer by you to purchase of the equipment described in this data sheet shall be subject to our standard terms and conditions of sale. The Equipment being quoted is described as used, and is being sold "AS IS, WHERE IS" with all defects, known or unknown, entirely at Buyer's own risk and reliance solely upon Buyer's own inspection of the goods and without reliance upon any representation or description by Seller or seller's representative concerning the goods.



SEMITOOL®		655 W. RESERVE DR., KALISPELL, MONTANA 59901	
MODEL NO.: RM04O2ECD0B02		SERIAL NO.: T239257	
SUPPLY VOLTAGE: 208Volts AC		ELECTRICAL DIAGRAM NO.: 630702	
PHASE: 3 PHASE, 3 WIRE & GROUND		LARGEST MOTOR OR LOAD: 10AMP	
FULL LOAD CURRENT: 35AMP		SHORT CIRCUIT INTERRUPT: 65000	
FREQUENCY: 50/60Hz.		SCCR RATING (A) 5000	
YEAR OF MFG 03/2008		OVERCURRENT PROTECTION PROVIDED AT MACHINE TERMIN	

This data sheet is provided to you on a strictly confidential basis and contains commercially sensitive and valuable information. No part of its content may be provided to any person without our prior written consent. This data sheet is not an offer capable of acceptance. The information contained in this data sheet is, to our knowledge and information, accurate, but it may contain typographical errors and we do not warrant the completeness or accuracy of the information contained herein. Any offer by you to purchase of the equipment described in this data sheet shall be subject to our standard terms and conditions of sale. The Equipment being quoted is described as used, and is being sold "AS IS, WHERE IS" with all defects, known or unknown, entirely at Buyer's own risk and reliance solely upon Buyer's own inspection of the goods and without reliance upon any representation or description by Seller or seller's representative concerning the goods.



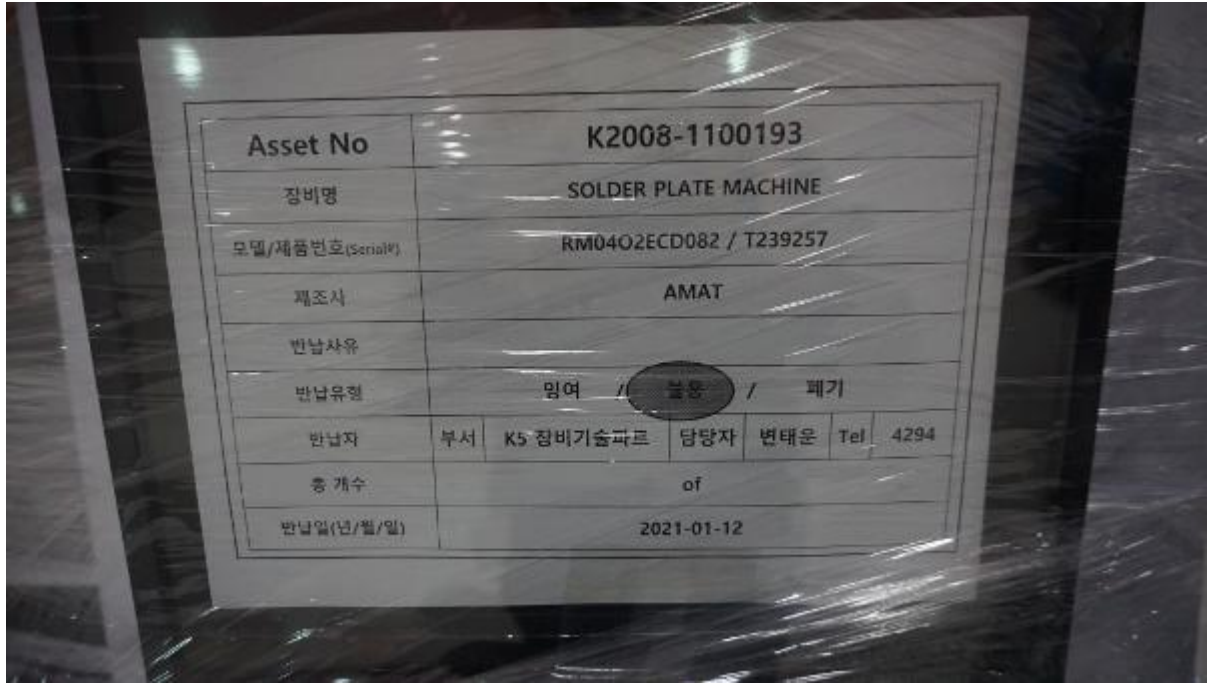
This data sheet is provided to you on a strictly confidential basis and contains commercially sensitive and valuable information. No part of its content may be provided to any person without our prior written consent. This data sheet is not an offer capable of acceptance. The information contained in this data sheet is, to our knowledge and information, accurate, but it may contain typographical errors and we do not warrant the completeness or accuracy of the information contained herein. Any offer by you to purchase of the equipment described in this data sheet shall be subject to our standard terms and conditions of sale. The Equipment being quoted is described as used, and is being sold "AS IS, WHERE IS" with all defects, known or unknown, entirely at Buyer's own risk and reliance solely upon Buyer's own inspection of the goods and without reliance upon any representation or description by Seller or seller's representative concerning the goods.



This data sheet is provided to you on a strictly confidential basis and contains commercially sensitive and valuable information. No part of its content may be provided to any person without our prior written consent. This data sheet is not an offer capable of acceptance. The information contained in this data sheet is, to our knowledge and information, accurate, but it may contain typographical errors and we do not warrant the completeness or accuracy of the information contained herein. Any offer by you to purchase of the equipment described in this data sheet shall be subject to our standard terms and conditions of sale. The Equipment being quoted is described as used, and is being sold "AS IS, WHERE IS" with all defects, known or unknown, entirely at Buyer's own risk and reliance solely upon Buyer's own inspection of the goods and without reliance upon any representation or description by Seller or seller's representative concerning the goods.



This data sheet is provided to you on a strictly confidential basis and contains commercially sensitive and valuable information. No part of its content may be provided to any person without our prior written consent. This data sheet is not an offer capable of acceptance. The information contained in this data sheet is, to our knowledge and information, accurate, but it may contain typographical errors and we do not warrant the completeness or accuracy of the information contained herein. Any offer by you to purchase of the equipment described in this data sheet shall be subject to our standard terms and conditions of sale. The Equipment being quoted is described as used, and is being sold "AS IS, WHERE IS" with all defects, known or unknown, entirely at Buyer's own risk and reliance solely upon Buyer's own inspection of the goods and without reliance upon any representation or description by Seller or seller's representative concerning the goods.



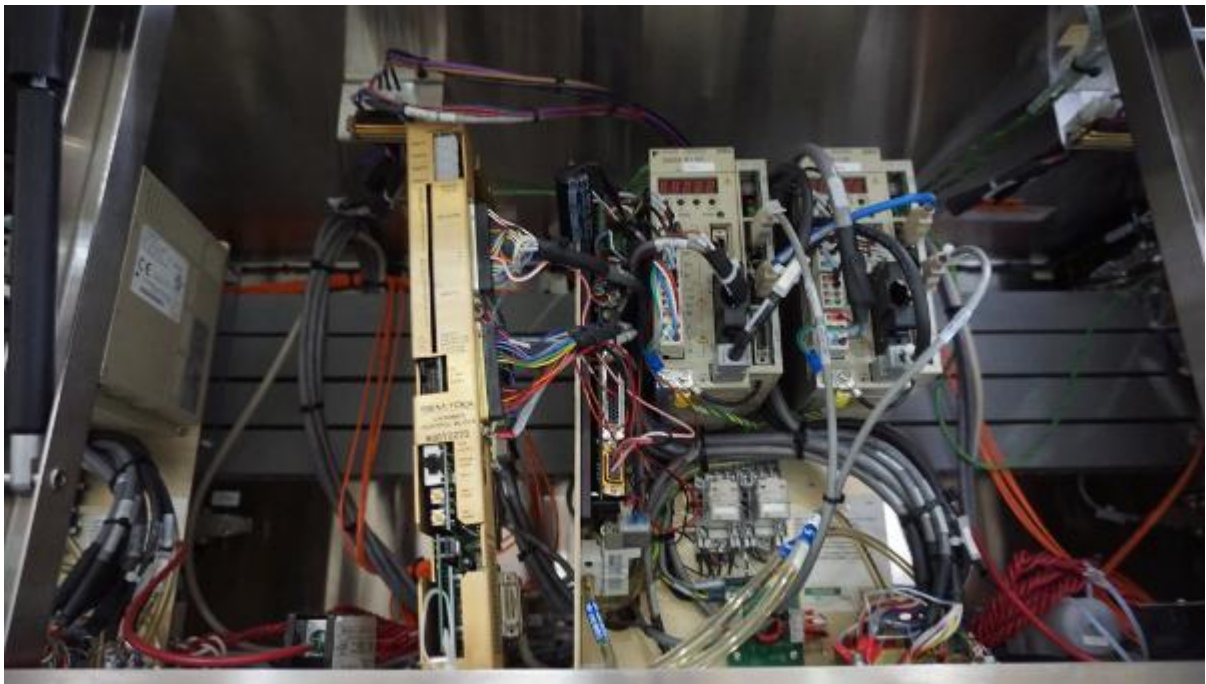
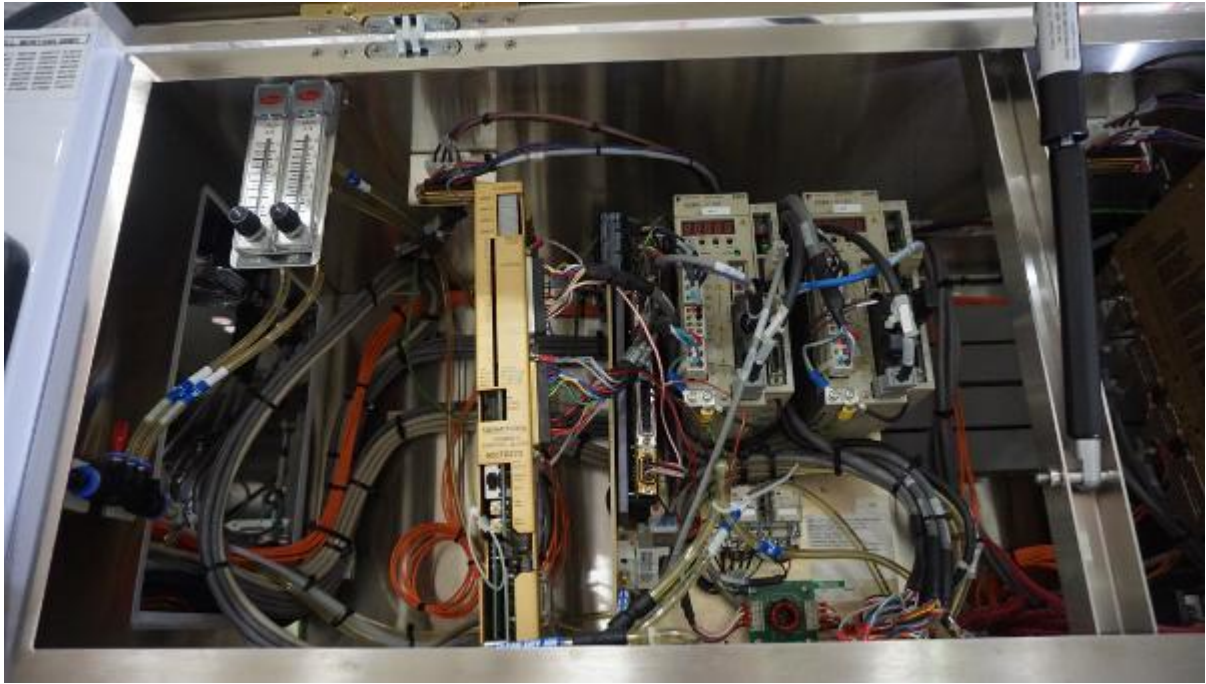
This data sheet is provided to you on a strictly confidential basis and contains commercially sensitive and valuable information. No part of its content may be provided to any person without our prior written consent. This data sheet is not an offer capable of acceptance. The information contained in this data sheet is, to our knowledge and information, accurate, but it may contain typographical errors and we do not warrant the completeness or accuracy of the information contained herein. Any offer by you to purchase of the equipment described in this data sheet shall be subject to our standard terms and conditions of sale. The Equipment being quoted is described as used, and is being sold "AS IS, WHERE IS" with all defects, known or unknown, entirely at Buyer's own risk and reliance solely upon Buyer's own inspection of the goods and without reliance upon any representation or description by Seller or seller's representative concerning the goods.



This data sheet is provided to you on a strictly confidential basis and contains commercially sensitive and valuable information. No part of its content may be provided to any person without our prior written consent. This data sheet is not an offer capable of acceptance. The information contained in this data sheet is, to our knowledge and information, accurate, but it may contain typographical errors and we do not warrant the completeness or accuracy of the information contained herein. Any offer by you to purchase of the equipment described in this data sheet shall be subject to our standard terms and conditions of sale. The Equipment being quoted is described as used, and is being sold "AS IS, WHERE IS" with all defects, known or unknown, entirely at Buyer's own risk and reliance solely upon Buyer's own inspection of the goods and without reliance upon any representation or description by Seller or seller's representative concerning the goods.



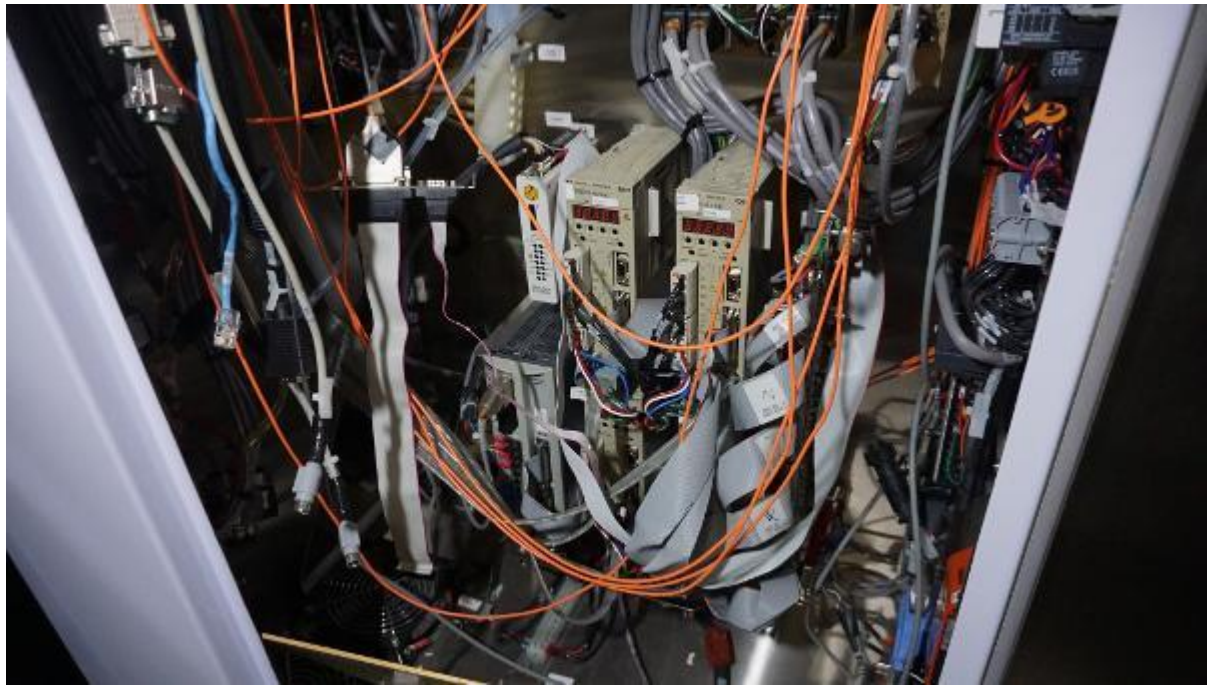
This data sheet is provided to you on a strictly confidential basis and contains commercially sensitive and valuable information. No part of its content may be provided to any person without our prior written consent. This data sheet is not an offer capable of acceptance. The information contained in this data sheet is, to our knowledge and information, accurate, but it may contain typographical errors and we do not warrant the completeness or accuracy of the information contained herein. Any offer by you to purchase of the equipment described in this data sheet shall be subject to our standard terms and conditions of sale. The Equipment being quoted is described as used, and is being sold "AS IS, WHERE IS" with all defects, known or unknown, entirely at Buyer's own risk and reliance solely upon Buyer's own inspection of the goods and without reliance upon any representation or description by Seller or seller's representative concerning the goods.



This data sheet is provided to you on a strictly confidential basis and contains commercially sensitive and valuable information. No part of its content may be provided to any person without our prior written consent. This data sheet is not an offer capable of acceptance. The information contained in this data sheet is, to our knowledge and information, accurate, but it may contain typographical errors and we do not warrant the completeness or accuracy of the information contained herein. Any offer by you to purchase of the equipment described in this data sheet shall be subject to our standard terms and conditions of sale. The Equipment being quoted is described as used, and is being sold "AS IS, WHERE IS" with all defects, known or unknown, entirely at Buyer's own risk and reliance solely upon Buyer's own inspection of the goods and without reliance upon any representation or description by Seller or seller's representative concerning the goods.



This data sheet is provided to you on a strictly confidential basis and contains commercially sensitive and valuable information. No part of its content may be provided to any person without our prior written consent. This data sheet is not an offer capable of acceptance. The information contained in this data sheet is, to our knowledge and information, accurate, but it may contain typographical errors and we do not warrant the completeness or accuracy of the information contained herein. Any offer by you to purchase of the equipment described in this data sheet shall be subject to our standard terms and conditions of sale. The Equipment being quoted is described as used, and is being sold "AS IS, WHERE IS" with all defects, known or unknown, entirely at Buyer's own risk and reliance solely upon Buyer's own inspection of the goods and without reliance upon any representation or description by Seller or seller's representative concerning the goods.



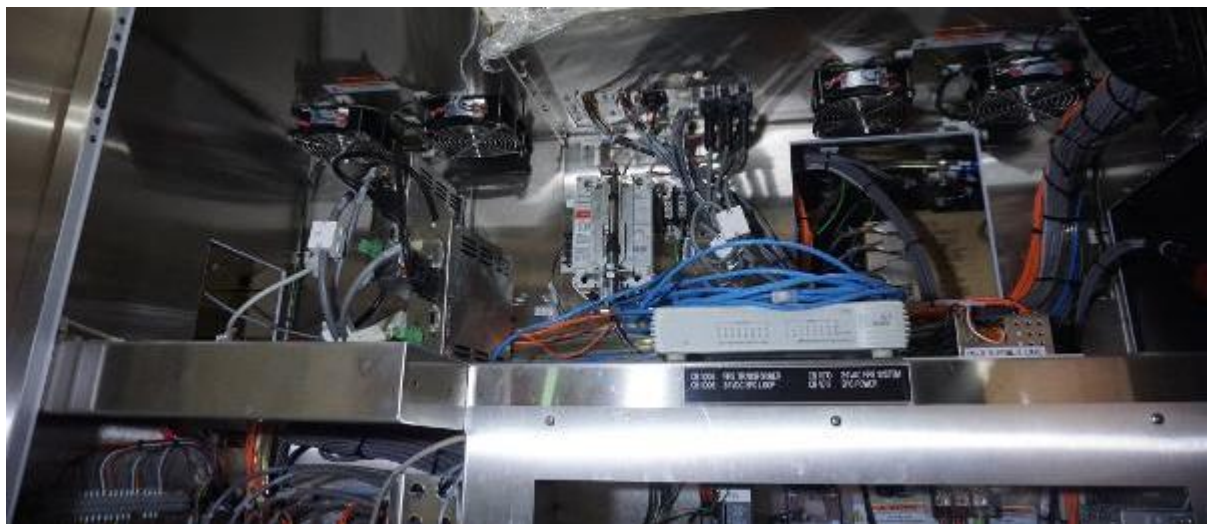
This data sheet is provided to you on a strictly confidential basis and contains commercially sensitive and valuable information. No part of its content may be provided to any person without our prior written consent. This data sheet is not an offer capable of acceptance. The information contained in this data sheet is, to our knowledge and information, accurate, but it may contain typographical errors and we do not warrant the completeness or accuracy of the information contained herein. Any offer by you to purchase of the equipment described in this data sheet shall be subject to our standard terms and conditions of sale. The Equipment being quoted is described as used, and is being sold "AS IS, WHERE IS" with all defects, known or unknown, entirely at Buyer's own risk and reliance solely upon Buyer's own inspection of the goods and without reliance upon any representation or description by Seller or seller's representative concerning the goods.



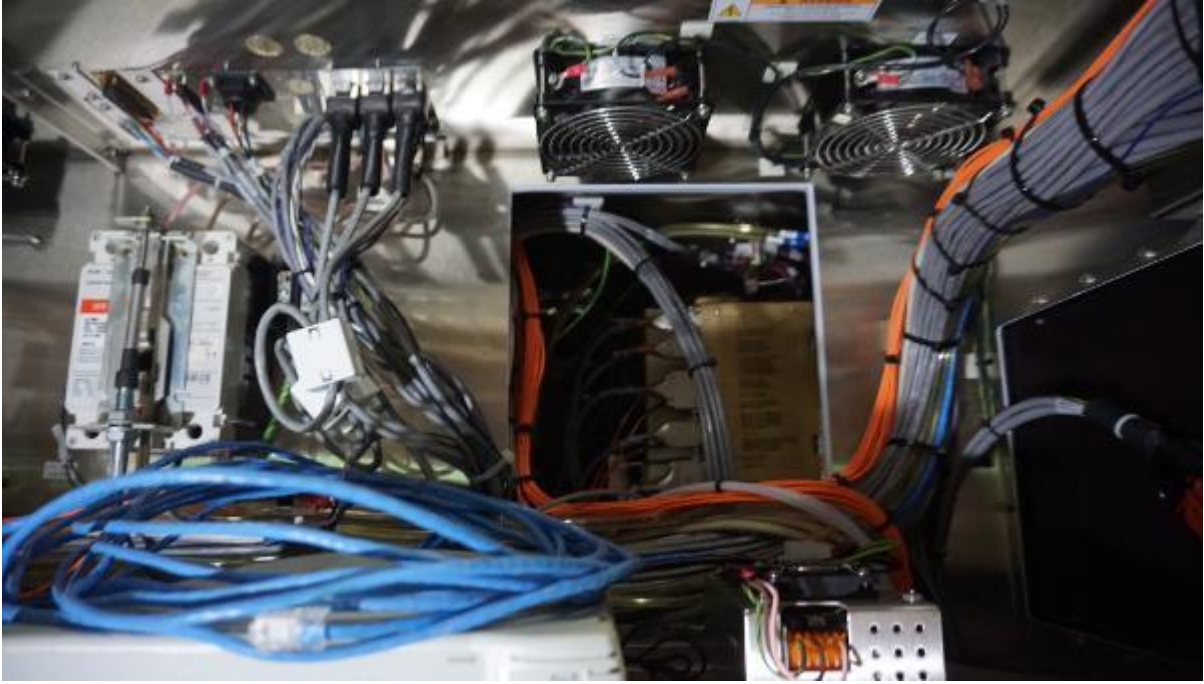
This data sheet is provided to you on a strictly confidential basis and contains commercially sensitive and valuable information. No part of its content may be provided to any person without our prior written consent. This data sheet is not an offer capable of acceptance. The information contained in this data sheet is, to our knowledge and information, accurate, but it may contain typographical errors and we do not warrant the completeness or accuracy of the information contained herein. Any offer by you to purchase of the equipment described in this data sheet shall be subject to our standard terms and conditions of sale. The Equipment being quoted is described as used, and is being sold "AS IS, WHERE IS" with all defects, known or unknown, entirely at Buyer's own risk and reliance solely upon Buyer's own inspection of the goods and without reliance upon any representation or description by Seller or seller's representative concerning the goods.



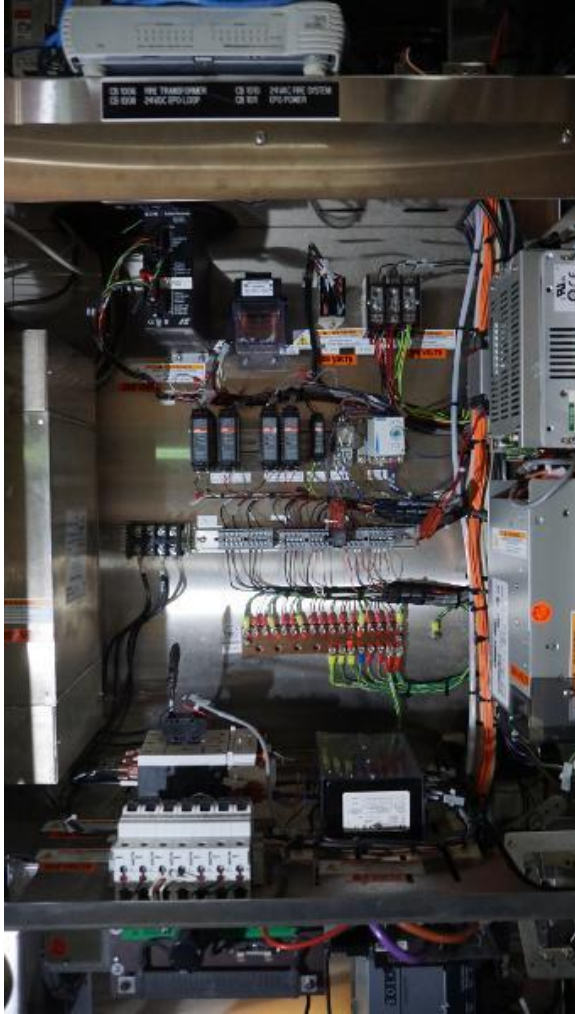
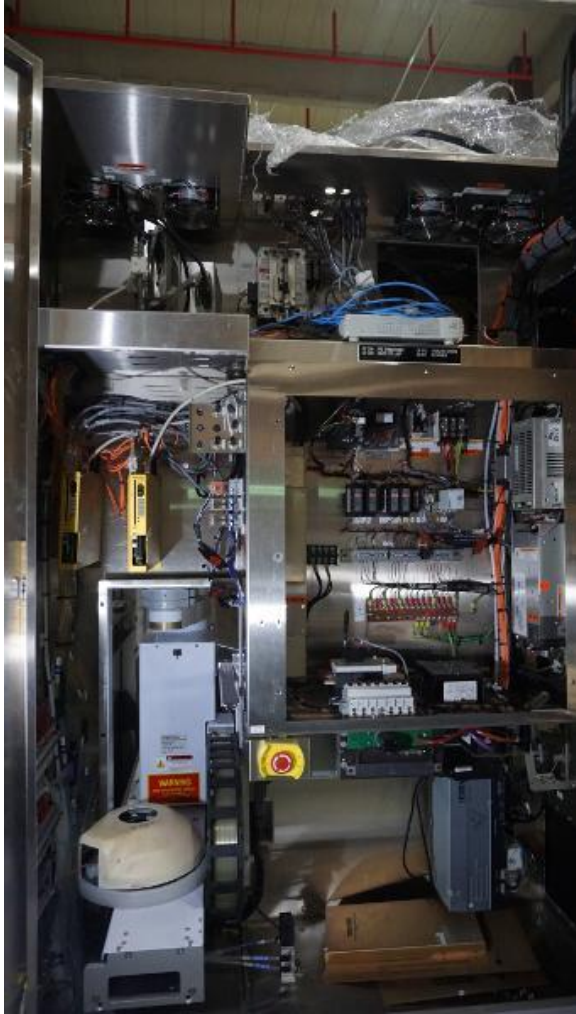
This data sheet is provided to you on a strictly confidential basis and contains commercially sensitive and valuable information. No part of its content may be provided to any person without our prior written consent. This data sheet is not an offer capable of acceptance. The information contained in this data sheet is, to our knowledge and information, accurate, but it may contain typographical errors and we do not warrant the completeness or accuracy of the information contained herein. Any offer by you to purchase of the equipment described in this data sheet shall be subject to our standard terms and conditions of sale. The Equipment being quoted is described as used, and is being sold "AS IS, WHERE IS" with all defects, known or unknown, entirely at Buyer's own risk and reliance solely upon Buyer's own inspection of the goods and without reliance upon any representation or description by Seller or seller's representative concerning the goods.



This data sheet is provided to you on a strictly confidential basis and contains commercially sensitive and valuable information. No part of its content may be provided to any person without our prior written consent. This data sheet is not an offer capable of acceptance. The information contained in this data sheet is, to our knowledge and information, accurate, but it may contain typographical errors and we do not warrant the completeness or accuracy of the information contained herein. Any offer by you to purchase of the equipment described in this data sheet shall be subject to our standard terms and conditions of sale. The Equipment being quoted is described as used, and is being sold "AS IS, WHERE IS" with all defects, known or unknown, entirely at Buyer's own risk and reliance solely upon Buyer's own inspection of the goods and without reliance upon any representation or description by Seller or seller's representative concerning the goods.



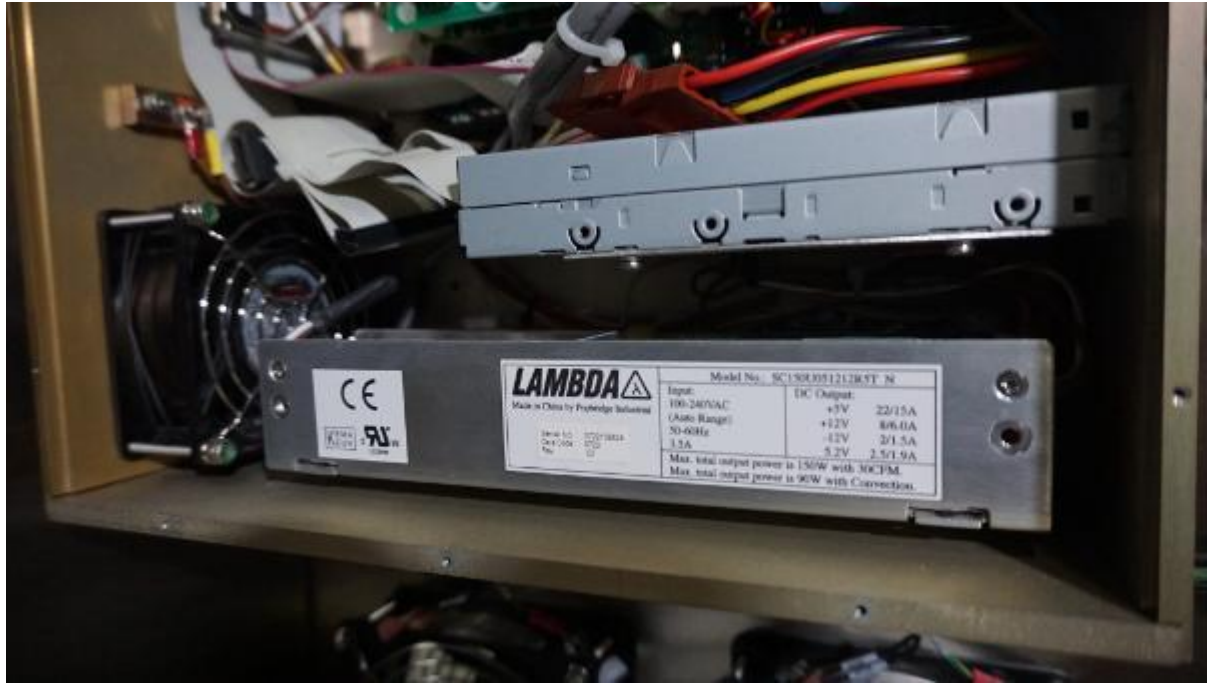
This data sheet is provided to you on a strictly confidential basis and contains commercially sensitive and valuable information. No part of its content may be provided to any person without our prior written consent. This data sheet is not an offer capable of acceptance. The information contained in this data sheet is, to our knowledge and information, accurate, but it may contain typographical errors and we do not warrant the completeness or accuracy of the information contained herein. Any offer by you to purchase of the equipment described in this data sheet shall be subject to our standard terms and conditions of sale. The Equipment being quoted is described as used, and is being sold "AS IS, WHERE IS" with all defects, known or unknown, entirely at Buyer's own risk and reliance solely upon Buyer's own inspection of the goods and without reliance upon any representation or description by Seller or seller's representative concerning the goods.



This data sheet is provided to you on a strictly confidential basis and contains commercially sensitive and valuable information. No part of its content may be provided to any person without our prior written consent. This data sheet is not an offer capable of acceptance. The information contained in this data sheet is, to our knowledge and information, accurate, but it may contain typographical errors and we do not warrant the completeness or accuracy of the information contained herein. Any offer by you to purchase of the equipment described in this data sheet shall be subject to our standard terms and conditions of sale. The Equipment being quoted is described as used, and is being sold "AS IS, WHERE IS" with all defects, known or unknown, entirely at Buyer's own risk and reliance solely upon Buyer's own inspection of the goods and without reliance upon any representation or description by Seller or seller's representative concerning the goods.



This data sheet is provided to you on a strictly confidential basis and contains commercially sensitive and valuable information. No part of its content may be provided to any person without our prior written consent. This data sheet is not an offer capable of acceptance. The information contained in this data sheet is, to our knowledge and information, accurate, but it may contain typographical errors and we do not warrant the completeness or accuracy of the information contained herein. Any offer by you to purchase of the equipment described in this data sheet shall be subject to our standard terms and conditions of sale. The Equipment being quoted is described as used, and is being sold "AS IS, WHERE IS" with all defects, known or unknown, entirely at Buyer's own risk and reliance solely upon Buyer's own inspection of the goods and without reliance upon any representation or description by Seller or seller's representative concerning the goods.



This data sheet is provided to you on a strictly confidential basis and contains commercially sensitive and valuable information. No part of its content may be provided to any person without our prior written consent. This data sheet is not an offer capable of acceptance. The information contained in this data sheet is, to our knowledge and information, accurate, but it may contain typographical errors and we do not warrant the completeness or accuracy of the information contained herein. Any offer by you to purchase of the equipment described in this data sheet shall be subject to our standard terms and conditions of sale. The Equipment being quoted is described as used, and is being sold "AS IS, WHERE IS" with all defects, known or unknown, entirely at Buyer's own risk and reliance solely upon Buyer's own inspection of the goods and without reliance upon any representation or description by Seller or seller's representative concerning the goods.



This data sheet is provided to you on a strictly confidential basis and contains commercially sensitive and valuable information. No part of its content may be provided to any person without our prior written consent. This data sheet is not an offer capable of acceptance. The information contained in this data sheet is, to our knowledge and information, accurate, but it may contain typographical errors and we do not warrant the completeness or accuracy of the information contained herein. Any offer by you to purchase of the equipment described in this data sheet shall be subject to our standard terms and conditions of sale. The Equipment being quoted is described as used, and is being sold "AS IS, WHERE IS" with all defects, known or unknown, entirely at Buyer's own risk and reliance solely upon Buyer's own inspection of the goods and without reliance upon any representation or description by Seller or seller's representative concerning the goods.

PTW ASIA PTE LTD



All Equipment is offered subject to prior sale. This item will be quoted based upon specific terms and configuration required. Interested parties may contact PTW Asia Pte Ltd at:

ask@ptwsingapore.com

Visit our web site at www.ptwsingapore.com © 2019 PTW ASIA PTE LTD.

This data sheet is provided to you on a strictly confidential basis and contains commercially sensitive and valuable information. No part of its content may be provided to any person without our prior written consent. This data sheet is not an offer capable of acceptance. The information contained in this data sheet is, to our knowledge and information, accurate, but it may contain typographical errors and we do not warrant the completeness or accuracy of the information contained herein. Any offer by you to purchase of the equipment described in this data sheet shall be subject to our standard terms and conditions of sale. The Equipment being quoted is described as used, and is being sold "AS IS, WHERE IS" with all defects, known or unknown, entirely at Buyer's own risk and reliance solely upon Buyer's own inspection of the goods and without reliance upon any representation or description by Seller or seller's representative concerning the goods.